

KALINA industries s.r.o.

# KALINA



Industrial production  
with a family approach.

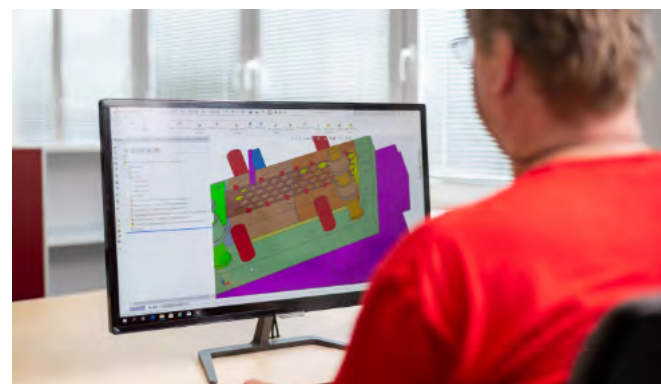
**Metal pressing plant  
with tool workshop**



↓ KALINA has both production and administrative facilities in the Příluky industrial zone in Zlín.



↓ We use a comprehensive SolidWorks 3D CAD system from Dassault Systèmes to design tools.



↓ KALINA offers a wide range of manufacturing technologies and their suitable combination for specific orders. We own high-end Bruderer machines in two versions – 25 and 80 tons.



## KALINA in numbers

**60**  
employees

**6 200**  
m<sup>2</sup> production site

**30 500 000**  
products per year

**500+**  
regular customers

of which  
**20 000 000**  
seals produced

**17 700+**  
product types

## KALINA today

In KALINA industries s.r.o., we manufacture seals and industrial parts for automotive, engineering, agriculture, food, construction, chemical, water-making, power and pharmaceutical industry.

The history of our family company dates back to 1990, when Jan Kalina started operating in Zlín. Today, his work continues with his daughter, her husband and their son.

Thanks to this experience, tradition and responsible approach, we supply products to customers in the Czech Republic and the European Union.



## Why do customers like us?

- 1 **Fast production**
- 2 **Price**
- 3 **Production quality**
- 4 **Material stock**
- 5 **Custom (piece) and batch production**
- 6 **Archiving of supplied drawings and templates**
- 7 **Combination of technologies**
- 8 **Partnership with customers**
- 9 **Packaging according to customer's requirements**
- 10 **Reliability**

Customers are loyal to us thanks to our responsible approach and reliability of deliveries; that's why we have been on the market for 30 years.

Thank you for your confidence.



We have implemented a quality management system according to the ISO 9001 standard with TÜV certification.

In line with customer requirements, we also meet the selected IATF 16949 and VDA standards.



# Metal pressing plant with tool workshop

## 1 Design office and tool shop

We make small and large series of metal and metal-plastic pressed products in a short term.

We design both the tools and the technological procedure individually with regard to the amount of products and always using the SolidWorks 3D software.

We can also manufacture with the use of tools provided by the customer.

The pressing plant operation is closely linked to the design office and tool workshop. Coordination is a fundamental advantage - we deal with individual customer requirements promptly.

## 2 Quality for automotive industry

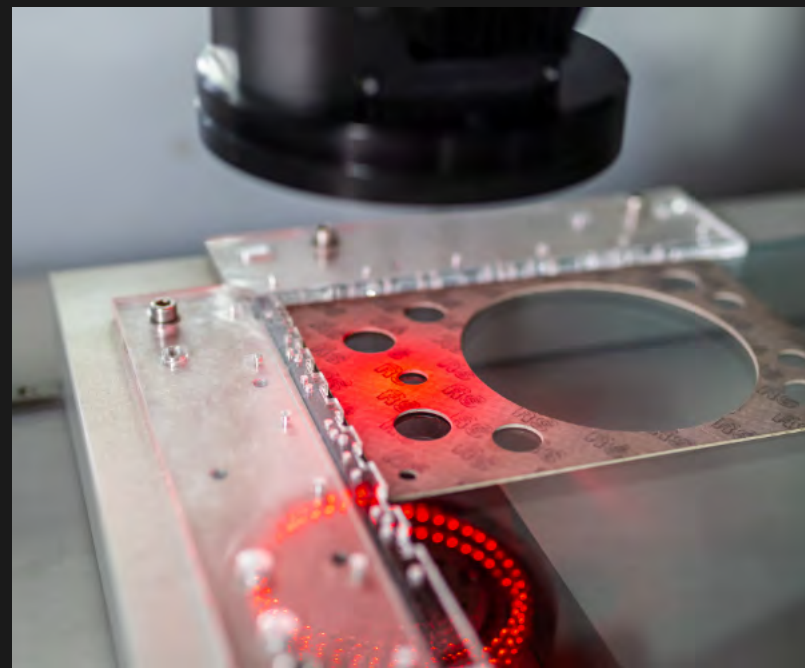
Our standard production is intended for the automotive industry - so we know and meet the requirements for inspection and measurement.

All internal processes in the company are managed by the HELIOS ORANGE system with the support of the QMS, WMS and MES tools. We are certified according to ISO 9001 and we meet the selected IATF 16949 and VDA standards based on customer requirements.

For serial projects, we use automated checks on the Vertex 311 equipment from MICRO-VU.



Our own design and production of tools is the basis for fast start of production at optimal cost.



## 3 Press machinery

- 20 eccentric pressing machines with tonnage of 5 - 250 t,
- five lines for roll processing with tonnage of 40 - 100 t,
- two high-speed Bruderer lines (25 and 80 t),
- two Rösler tumbling machines including drying.

### Combination of pressing and laser cutting

By combining these technologies, we can significantly reduce costs and time to prepare production.

## 4 Various material types on stock

Pressing plant machinery allows various types of materials to be processed:

- stainless steel and electrical insulating sheets,
- aluminium and copper alloys.

We process the materials both in plates and rolls (thickness of 0.1 to 6 mm).

The maximum width of the product is 600 mm and the maximum length is 1,000 mm.





## 5 Finishing operations

After pressing the products, we can provide the following operations:

- tumbling,
- drying,
- preserving.

Upon the customer's request, we can subcontract the following operations:

- quenching,
- annealing,
- carbo-nitro-oxidation,
- blackening,
- zinc, nickel and tin plating.

## 6 Shipping

In addition to the standard packaging, we are able to label, pack, or set the products on the basis of the customer's requirements.



# KALINA



Industrial production  
with a family approach.

## Head office:

KALINA industries s.r.o.  
U Tescomy 255, Zlín - Lužkovice

Phone: +420 577 006 830  
Cell phone No.: +420 733 314 224

info@kalina.cz  
www.kalina.cz

## Tábor branch:

Kalina Tábor s.r.o.  
Michalovicova 3019, Tábor

Phone: +420 381 282 778  
Cell phone no.: +420 603 847 210

obchod@kalinatabor.cz  
www.kalinatabor.cz

## Technologies offered

- Metal pressing plant with tool workshop
- Water jet cutting
- Laser cutting
- Bending and forming
- CNC knife cutting
- Cutting workshop
- Custom-order workshop

